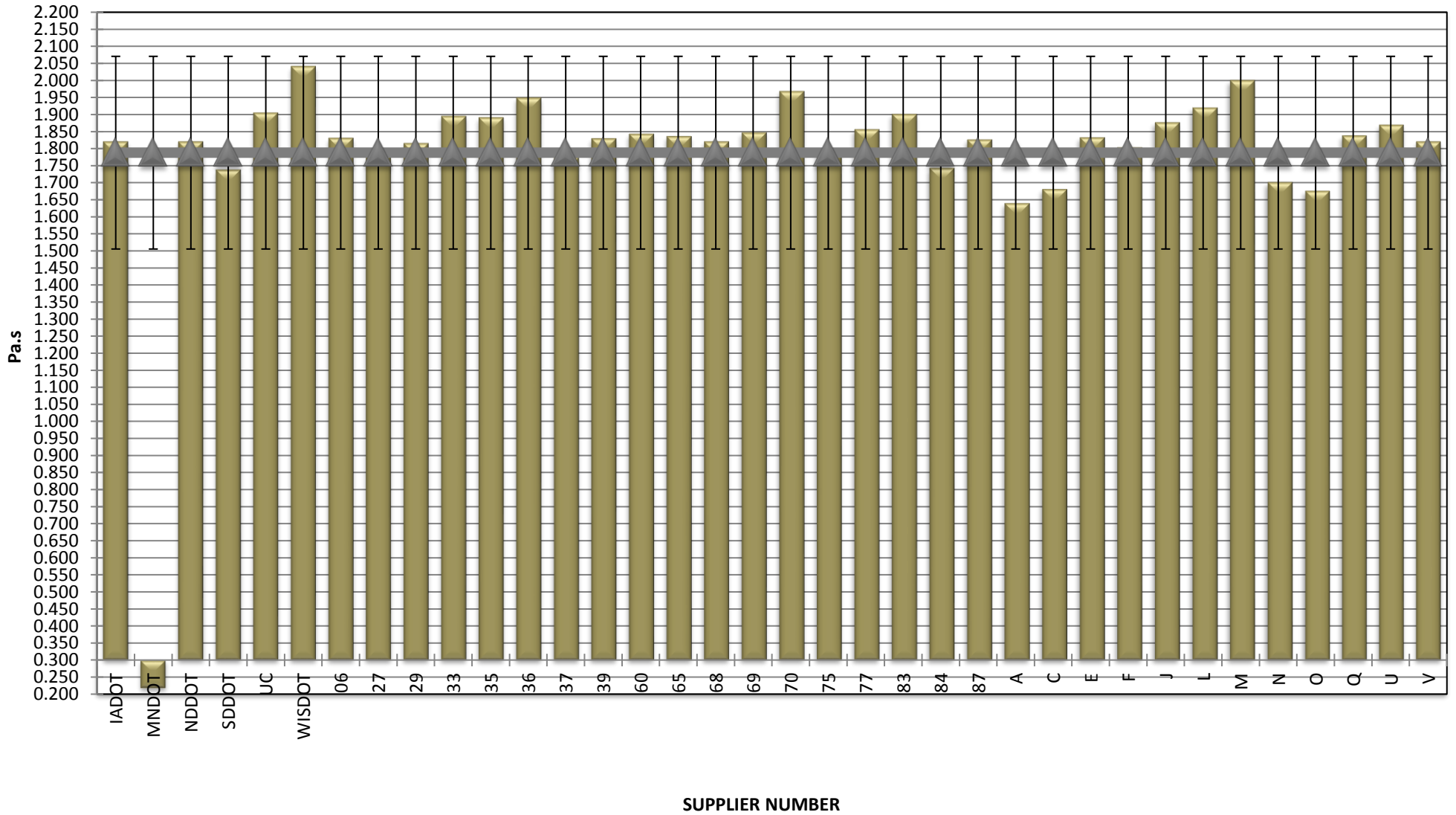


COMBINED STATE BINDER GROUP ROUND ROBIN SUMMARY B 2018-4

| | Rot. Visc. | ODSR | RTFO DSR | PAVDSR | Mass Loss | S-value | m-value | Jnr @ 100 Pa | % Rec. 100 Pa | Jnr @ 3200 Pa | % Rec. @ 3200 Pa |
|----------|------------|------|----------|--------|-----------|----------|---------|--------------|---------------|---------------|------------------|
| A | | | | | | | | | | | |
| 19 | 1.845 | 5.82 | | 2,201 | 0.667 | 242 | 0.340 | 0.006 | 98.50 | 0.012 | 97.00 |
| 51 | 1.038 | 5.66 | | 2,340 | 0.566 | 244 | 0.341 | 0.006 | 98.70 | 0.012 | 97.40 |
| 97 | 1.840 | 5.61 | | 2,423 | 0.579 | 227 | 0.344 | 0.006 | 98.70 | 0.012 | 97.30 |
| 98 | 1.833 | 5.72 | | 2,304 | 0.604 | 238 | 0.343 | 0.006 | 98.50 | 0.012 | 96.90 |
| AVERAGE | 1.639 | 5.70 | | 2,317 | 0.604 | 238 | 0.342 | 0.006 | 98.60 | 0.012 | 97.15 |
| C | | | | | | | | | | | |
| 28 | 1.678 | 6.02 | | 2,626 | 0.457 | 225 | 0.338 | 0.006 | 98.64 | 0.012 | 97.16 |
| 66 | 1.682 | 5.85 | | 2,502 | 0.513 | 226 | 0.333 | 0.006 | 98.46 | 0.013 | 96.97 |
| 90 | 1.677 | 5.92 | | 2,783 | 0.475 | 228 | 0.334 | 0.006 | 98.66 | 0.014 | 97.16 |
| 99 | 1.683 | 5.84 | | 2,516 | 0.497 | 225 | 0.329 | 0.006 | 98.48 | 0.013 | 96.98 |
| AVERAGE | 1.680 | 5.91 | | 2,607 | 0.486 | 226 | 0.334 | 0.006 | 98.56 | 0.013 | 97.07 |
| E | | | | | | | | | | | |
| 15 | 1.825 | 5.90 | | 2,320 | 0.610 | 228 | 0.332 | 0.006 | 98.42 | 0.011 | 97.05 |
| 89 | 1.838 | 5.83 | | 2,560 | 0.566 | 216 | 0.335 | 0.005 | 98.64 | 0.011 | 97.22 |
| AVERAGE | 1.832 | 5.87 | | 2,440 | 0.588 | 222 | 0.334 | 0.006 | 98.53 | 0.011 | 97.14 |
| F | | | | | | | | | | | |
| 02 | 1.772 | 6.02 | | 3,051 | 0.600 | 265 | 0.327 | 0.005 | 98.50 | 0.011 | 97.06 |
| 11 | 1.782 | 6.18 | | 2,963 | 0.599 | 262 | 0.332 | 0.005 | 98.55 | 0.011 | 96.99 |
| 34 | 1.792 | 6.03 | | 3,015 | 0.538 | 260 | 0.331 | 0.002 | 99.58 | 0.012 | 97.15 |
| 48 | 1.798 | 5.94 | | 3,000 | 0.586 | 263 | 0.329 | 0.004 | 98.73 | 0.011 | 97.16 |
| 56 | 1.817 | 5.88 | | 3,130 | 0.581 | 261 | 0.331 | 0.004 | 98.96 | 0.011 | 97.07 |
| 62 | 1.853 | 5.95 | | 2,670 | 0.708 | 268 | 0.323 | 0.005 | 98.67 | 0.010 | 97.36 |
| AVERAGE | 1.802 | 6.00 | | 2,972 | 0.602 | 263 | 0.329 | 0.004 | 98.83 | 0.011 | 97.13 |
| J | | | | | | | | | | | |
| 05 | 1.833 | 5.61 | | 1,800 | 0.767 | 212 | 0.457 | 0.064 | 98.55 | 0.014 | 96.83 |
| 08 | 1.845 | 5.93 | | 1,770 | 0.774 | 212 | 0.352 | 0.059 | 98.63 | 0.013 | 97.00 |
| 10 | 1.921 | 5.86 | | 2,662 | 0.665 | 244 | 0.323 | -0.047 | 100.00 | -0.019 | 100.00 |
| 22 | 1.950 | 5.88 | | 2,614 | 0.603 | 247 | 0.328 | -0.022 | 100.00 | -0.020 | 100.00 |
| 31 | 1.795 | 5.65 | | 1,950 | 0.769 | 221 | 0.352 | 0.051 | 98.63 | 0.011 | 97.19 |
| 41 | 1.798 | 5.48 | | 1,720 | 0.766 | 218 | 0.342 | 0.057 | 98.52 | 0.012 | 96.85 |
| 44 | 1.919 | 6.02 | | 2,712 | 0.578 | 244 | 0.323 | -0.041 | 100.00 | -0.024 | 100.00 |
| 52 | 1.942 | 5.86 | | 2,727 | 0.669 | 251 | 0.327 | -0.023 | 100.00 | -0.030 | 100.00 |
| AVERAGE | 1.875 | 5.79 | | 2,244 | 0.699 | 231 | 0.351 | 0.012 | 99.29 | -0.005 | 98.48 |
| L | | | | | | | | | | | |
| 25 | 1.950 | 6.32 | | 1,951 | 0.720 | 106 | 0.383 | 4.400 | 98.30 | 8.100 | 97.00 |
| 59 | 1.888 | 6.04 | | 2,953 | 0.571 | 231 | 0.323 | 0.020 | 96.50 | 0.010 | 96.90 |
| AVERAGE | 1.919 | 6.18 | | 2,452 | 0.646 | 168.5 | 0.353 | 2.210 | 97.40 | 4.055 | 96.95 |
| M | | | | | | | | | | | |
| 04 | 1.923 | 5.93 | | 2,496 | 0.512 | 258 | 0.330 | | | | |
| 47 | 2.142 | 6.06 | | 2,214 | 0.429 | 255 | 0.332 | | | | |
| 57 | 1.933 | 6.05 | | 2,386 | 0.525 | 273 | 0.328 | | | | |
| AVERAGE | 1.999 | 6.01 | | 2,365 | 0.489 | 262 | 0.330 | | | | |
| N | | | | | | | | | | | |
| 07 | 1.700 | 6.01 | | 2,494 | 0.522 | 245 | 0.337 | -0.042 | 100.00 | -0.026 | 100.00 |
| 95 | 1.700 | 6.05 | | 2,561 | 0.591 | 250 | 0.335 | -0.030 | 100.00 | -0.015 | 100.00 |
| AVERAGE | 1.700 | 6.03 | | 2,528 | 0.556 | 248 | 0.336 | -0.036 | 100.00 | -0.021 | 100.00 |
| O | | | | | | | | | | | |
| 76 | 1.675 | 5.80 | | 2,830 | 0.534 | 254.000 | 0.333 | 0.006 | 98.56 | 0.012 | 97.08 |
| 85 | 1.675 | 5.85 | | 2,830 | 0.542 | 244 | 0.331 | 0.006 | 98.49 | 0.011 | 97.18 |
| AVERAGE | 1.675 | 5.83 | | 2,830 | 0.538 | 249 | 0.332 | 0.006 | 98.53 | 0.012 | 97.13 |
| Q | | | | | | | | | | | |
| 23 | 1.837 | 5.80 | | 2,608 | 0.571 | 243 | 0.339 | 0.005 | 98.81 | 0.011 | 97.28 |
| 93 | 1.837 | 5.88 | | 2,450 | 0.614 | 258 | 0.338 | 0.005 | 98.69 | 0.012 | 97.26 |
| AVERAGE | 1.837 | 5.84 | | 2,529 | 0.5925 | 251 | 0.339 | 0.005 | 98.75 | 0.012 | 97.27 |
| U | | | | | | | | | | | |
| 13 | 1.915 | 5.92 | | 2,940 | 0.462 | 232 | 0.330 | 0.005 | 98.65 | 0.011 | 97.27 |
| 24 | 1.822 | 6.10 | | 2,870 | 0.528 | 235 | 0.336 | 0.005 | 98.61 | 0.011 | 97.01 |
| AVERAGE | 1.869 | 6.01 | | 2,905 | 0.495 | 234 | 0.333 | 0.005 | 98.63 | 0.011 | 97.14 |
| V | | | | | | | | | | | |
| 58 | 1.830 | 5.87 | | 2,680 | 0.599 | 260 | 0.328 | 0.005 | 98.81 | 0.010 | 97.42 |
| 78 | 1.820 | 5.89 | | 2,810 | 0.610 | 262 | 0.326 | 0.006 | 98.66 | 0.011 | 97.22 |
| 81 | 1.810 | 5.88 | | 2,850 | 0.607 | 256 | 0.330 | 0.006 | 98.63 | 0.001 | 97.26 |
| AVERAGE | 1.820 | 5.88 | | 2,780 | 0.605 | 259.3333 | 0.328 | 0.005 | 98.70 | 0.008 | 97.30 |

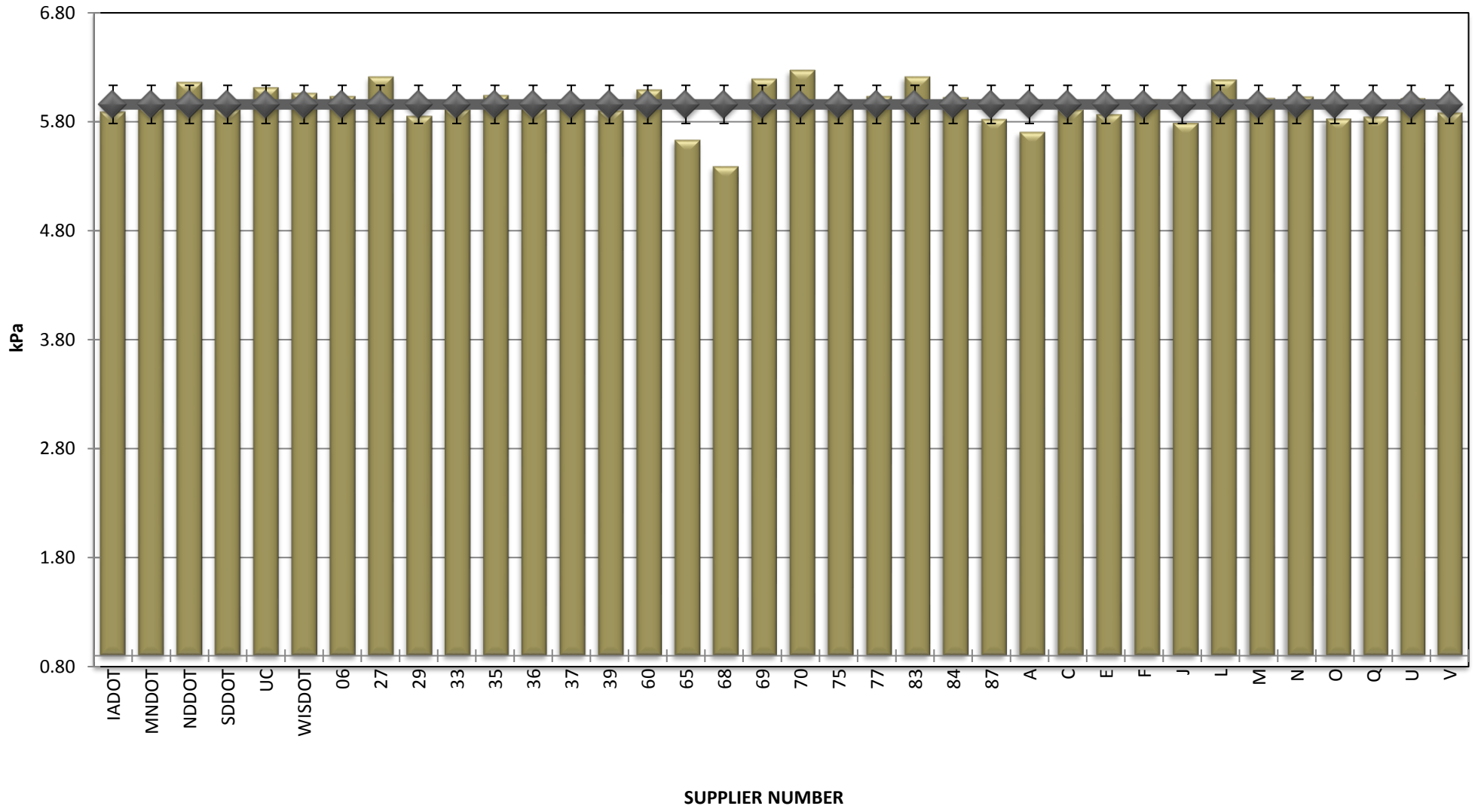
**COMBINED STATE BINDER GROUP ROUND ROBIN
SUMMARY B 2018-4**

ROTATIONAL VISCOSITY



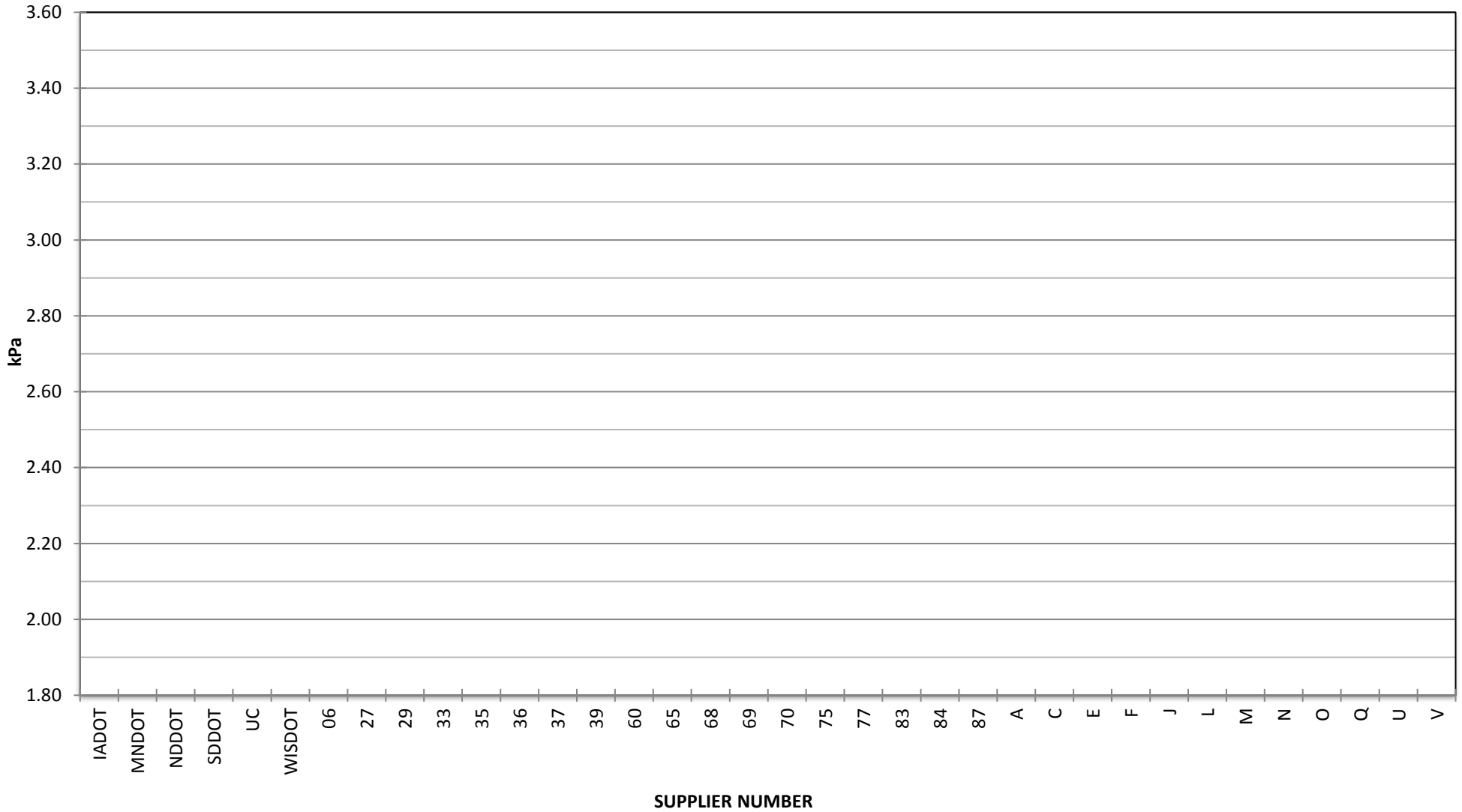
COMBINED STATE BINDER GROUP ROUND ROBIN
SUMMARY B 2018-4

DSR - ORIGINAL



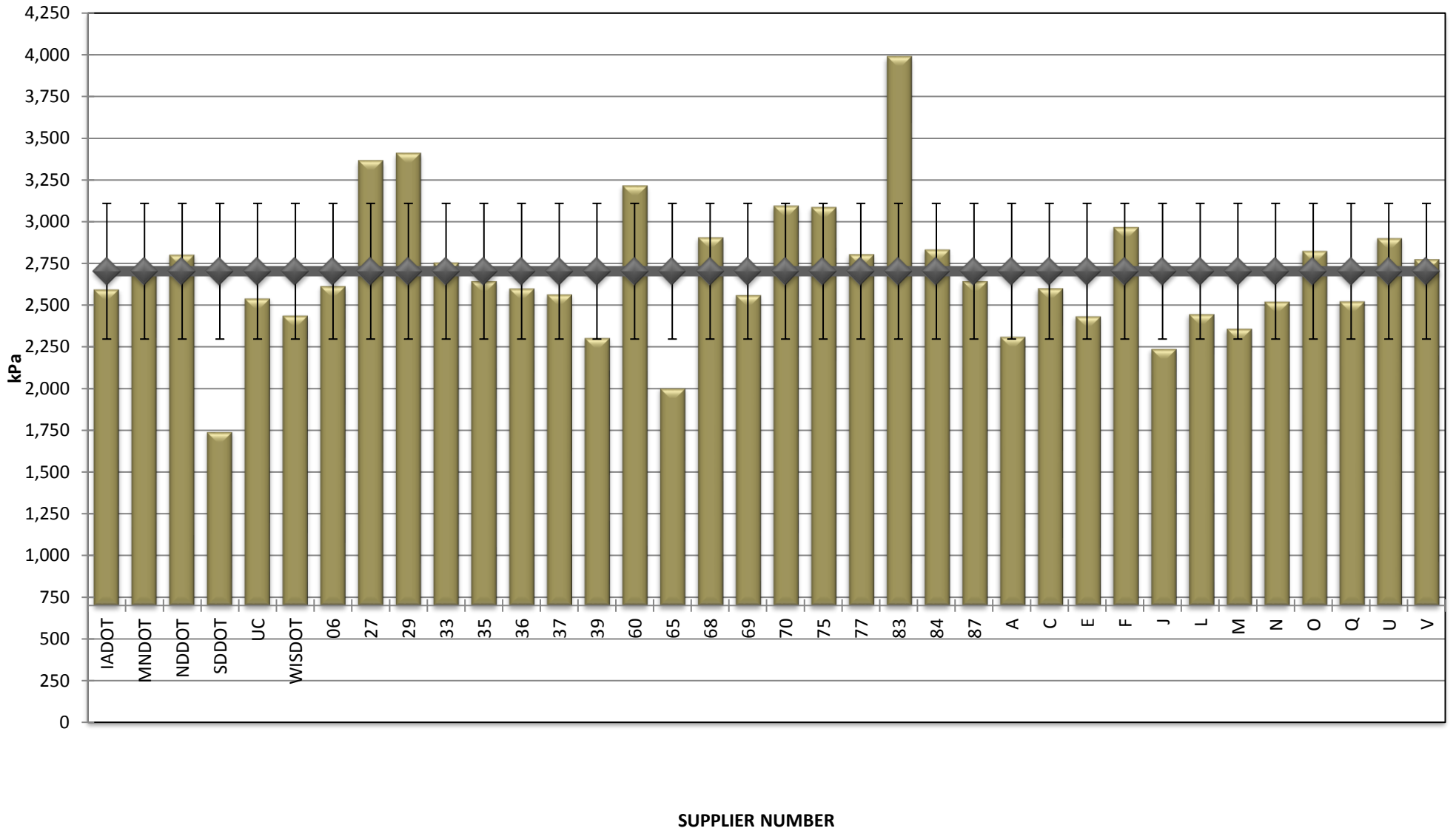
COMBINED STATE BINDER GROUP ROUND ROBIN
SUMMARY B 2018-4

DSR - RTFO



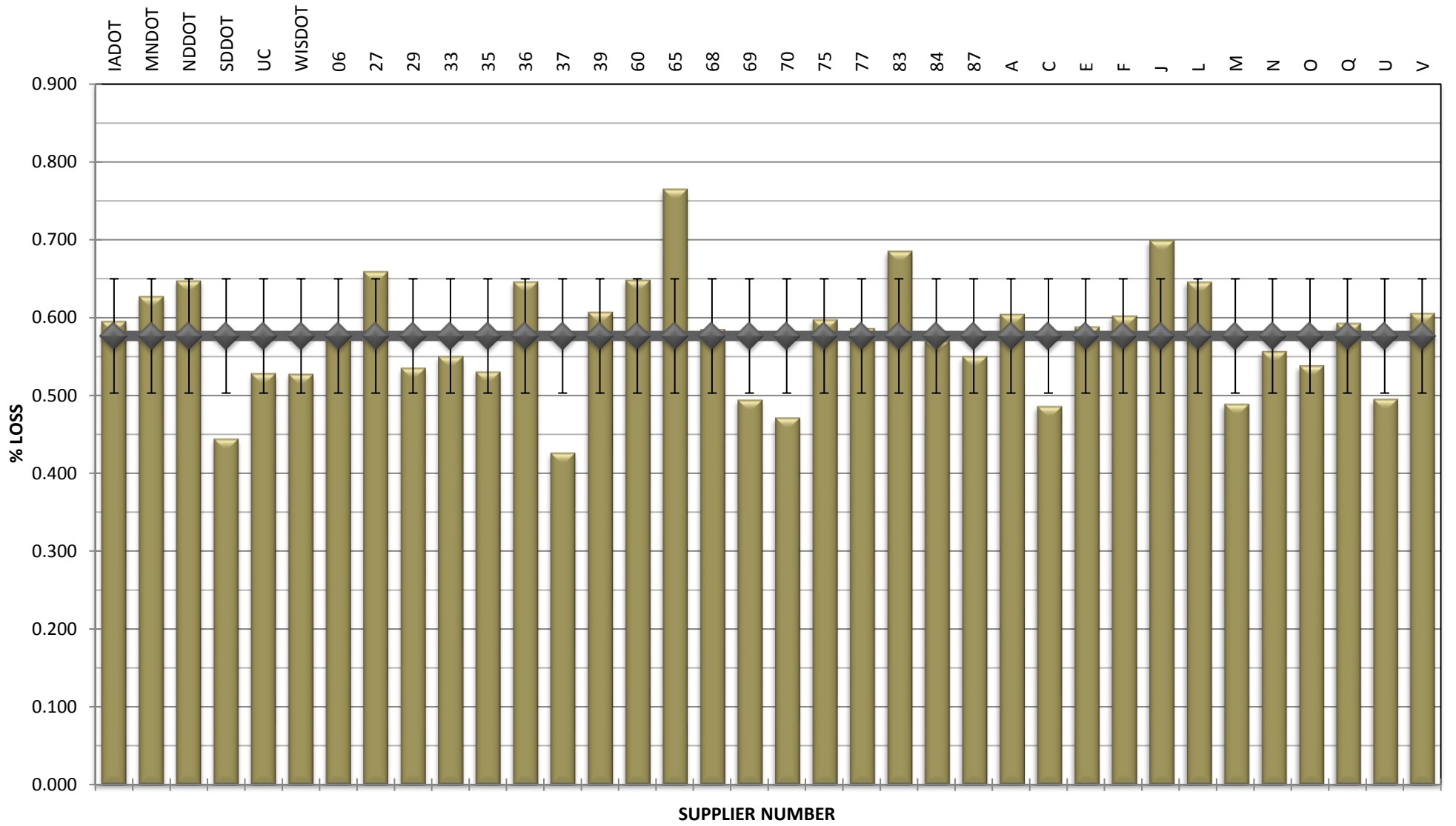
**COMBINED STATE BINDER GROUP ROUND ROBIN
SUMMARY B 2018-4**

DSR - PAV



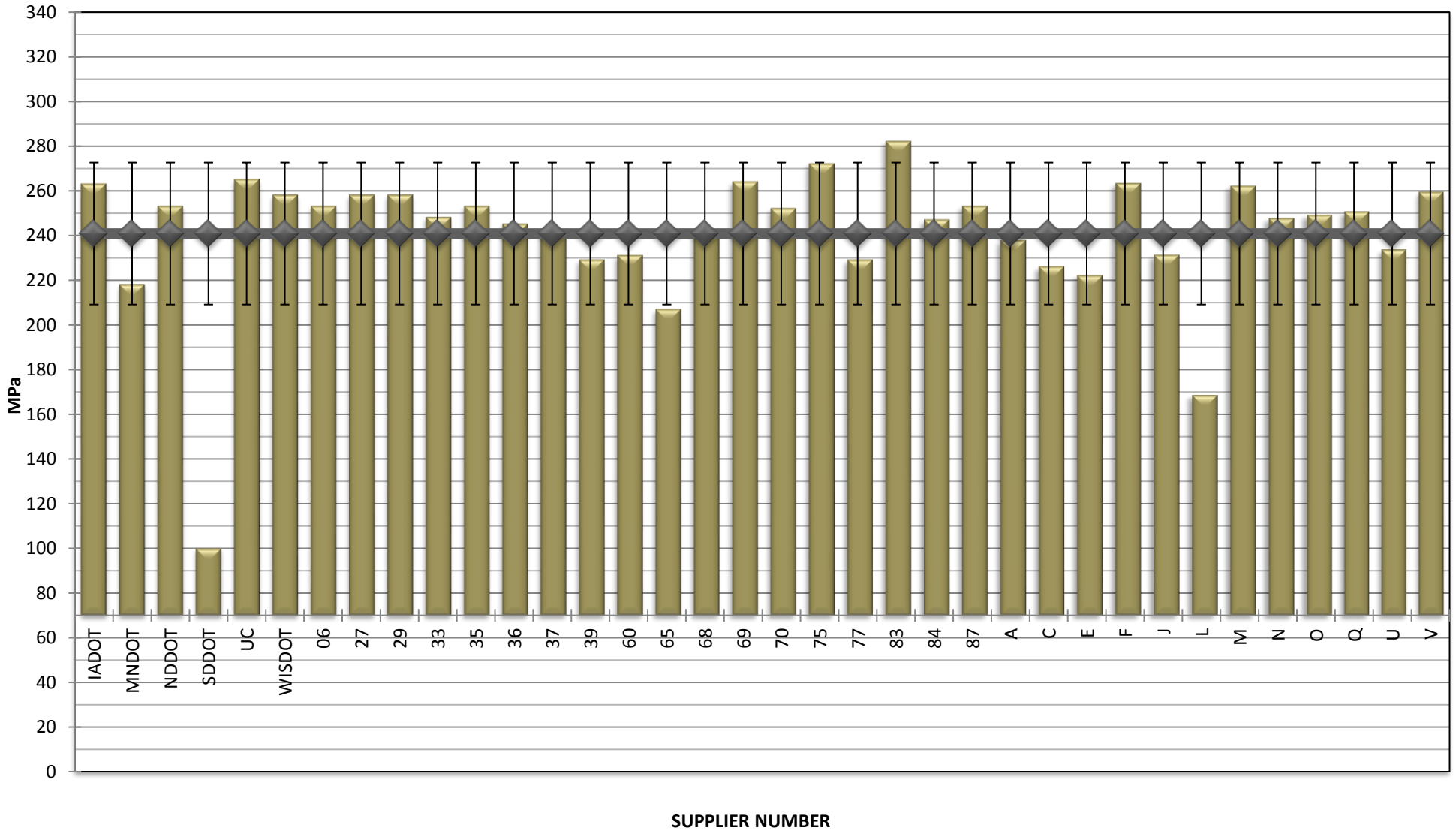
**COMBINED STATE BINDER GROUP ROUND ROBIN
SUMMARY B 2018-4**

RTFO MASS LOSS



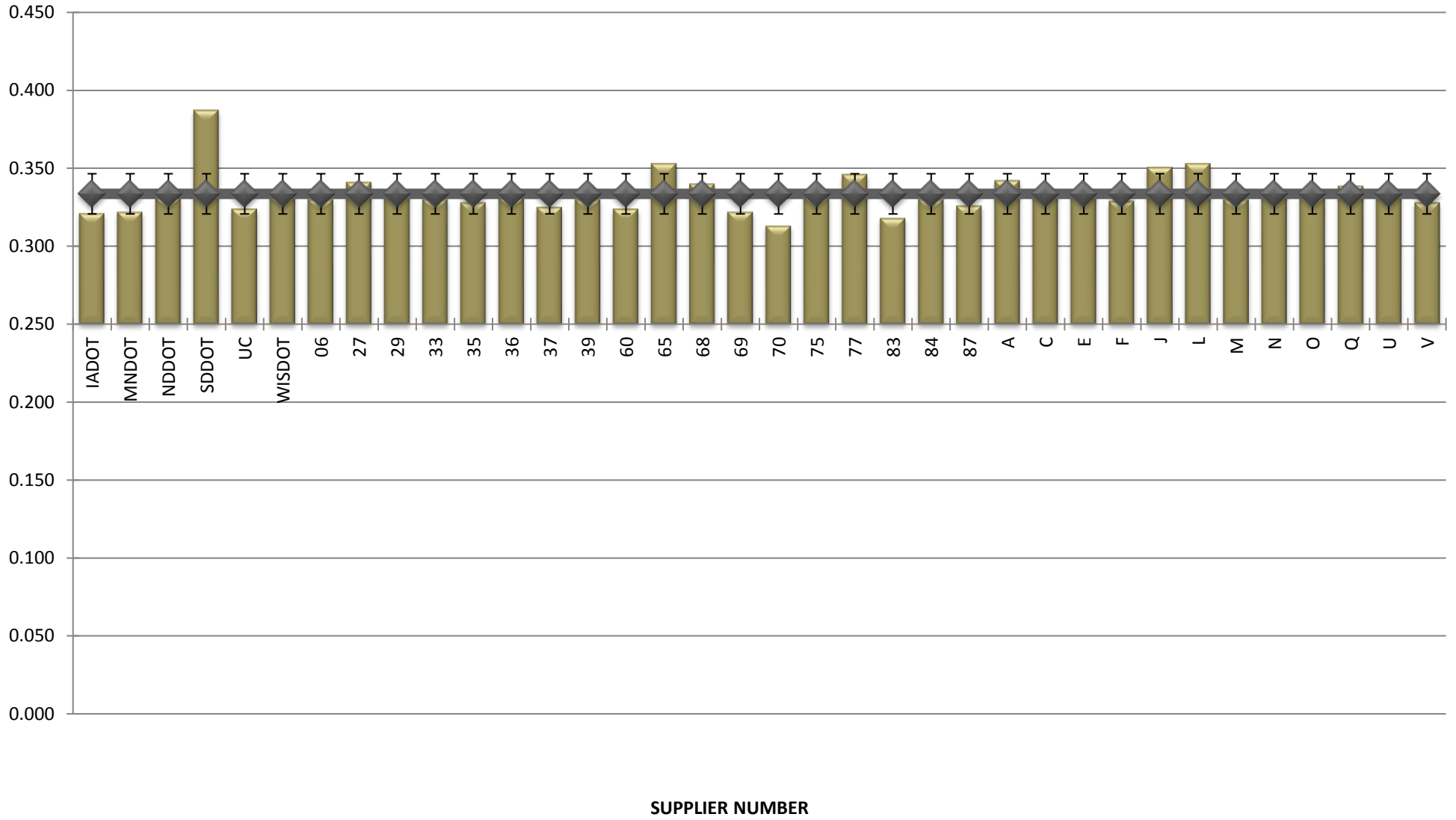
**COMBINED STATE BINDER GROUP ROUND ROBIN
SUMMARY B 2018-4**

BBR STIFFNESS



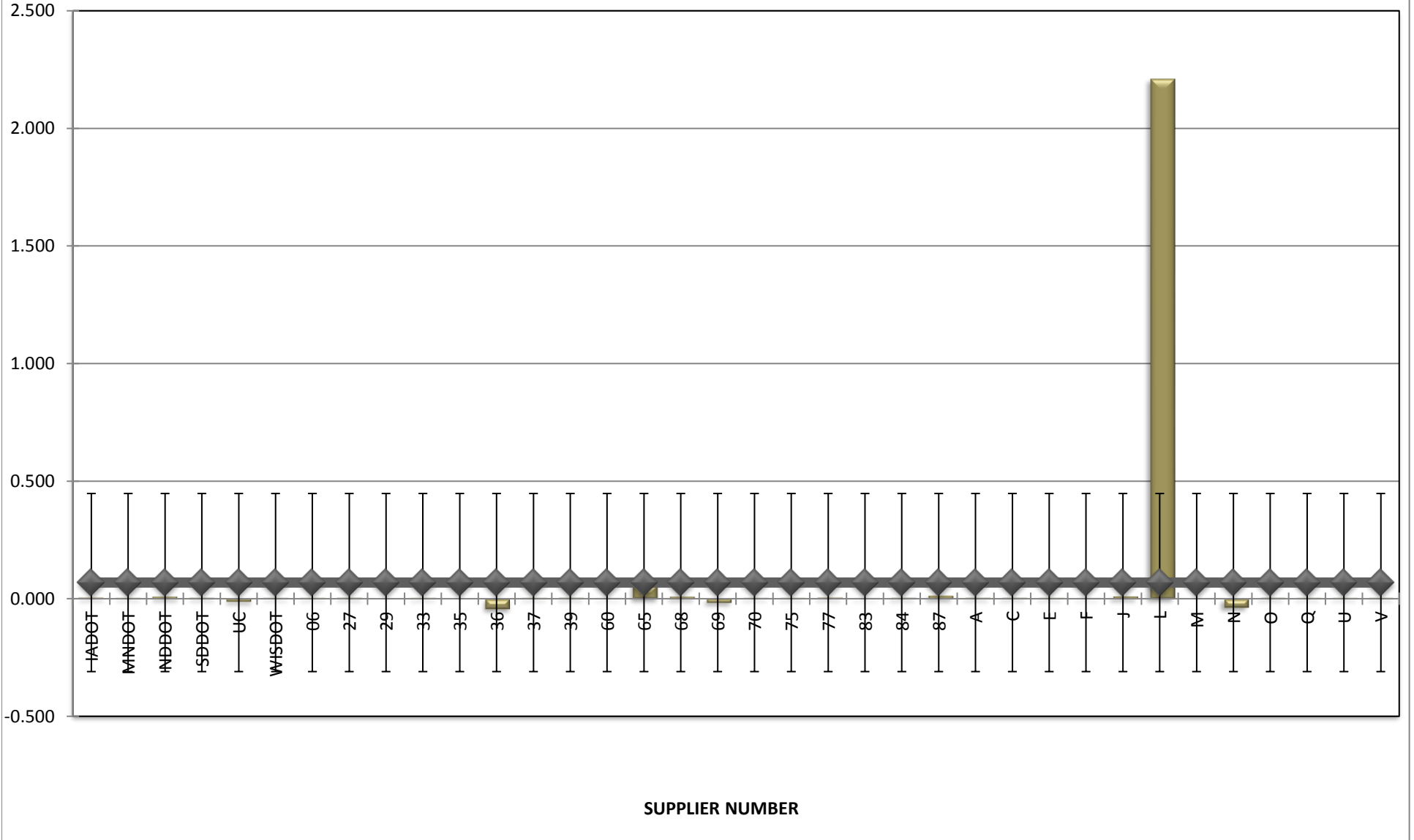
COMBINED STATE BINDER GROUP ROUND ROBIN
SUMMARY B 2018-4

BBR m-VALUE



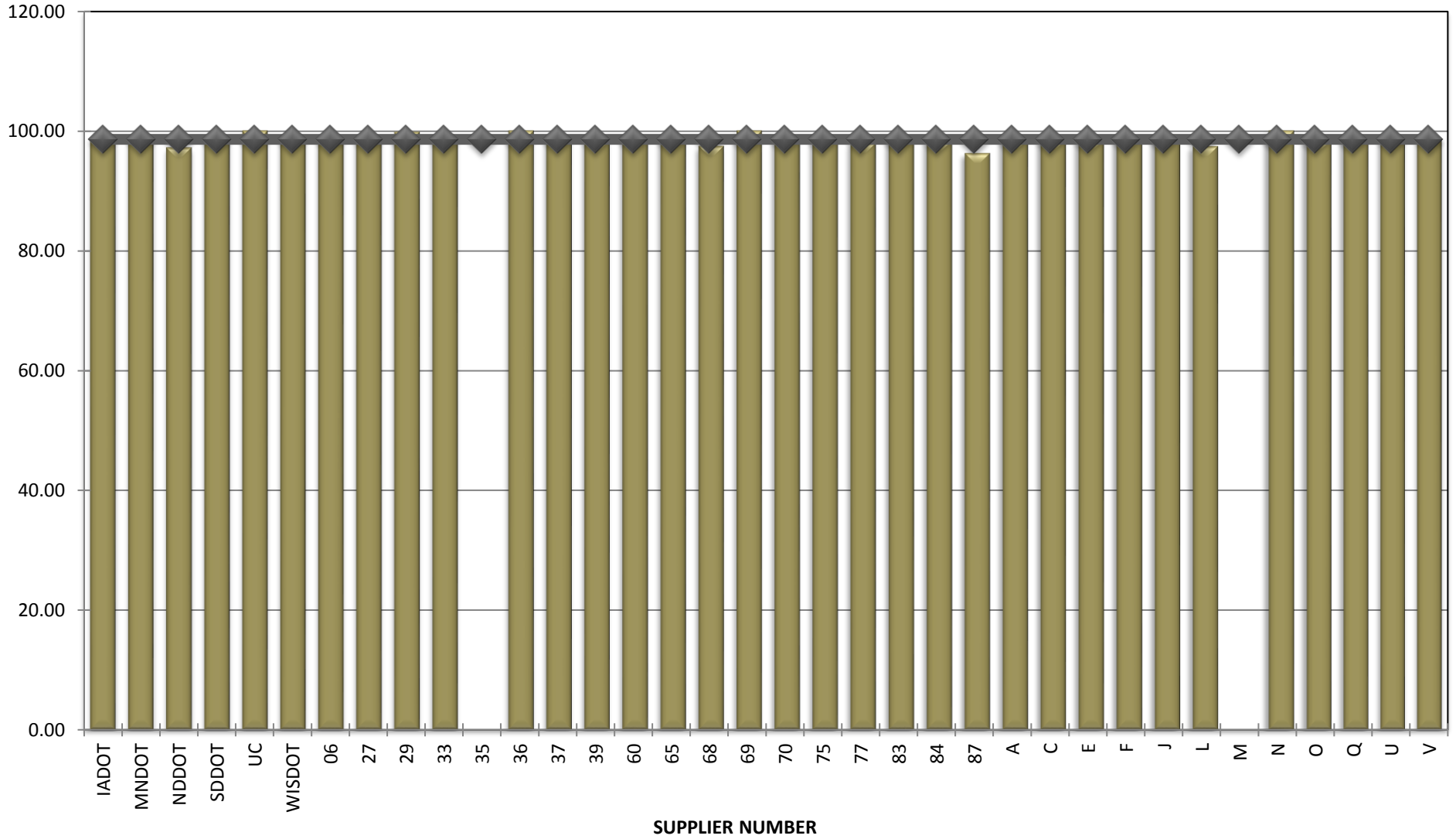
COMBINED STATE BINDER GROUP ROUND ROBIN
SUMMARY B 2018-4

Jnr @ 100 Pa



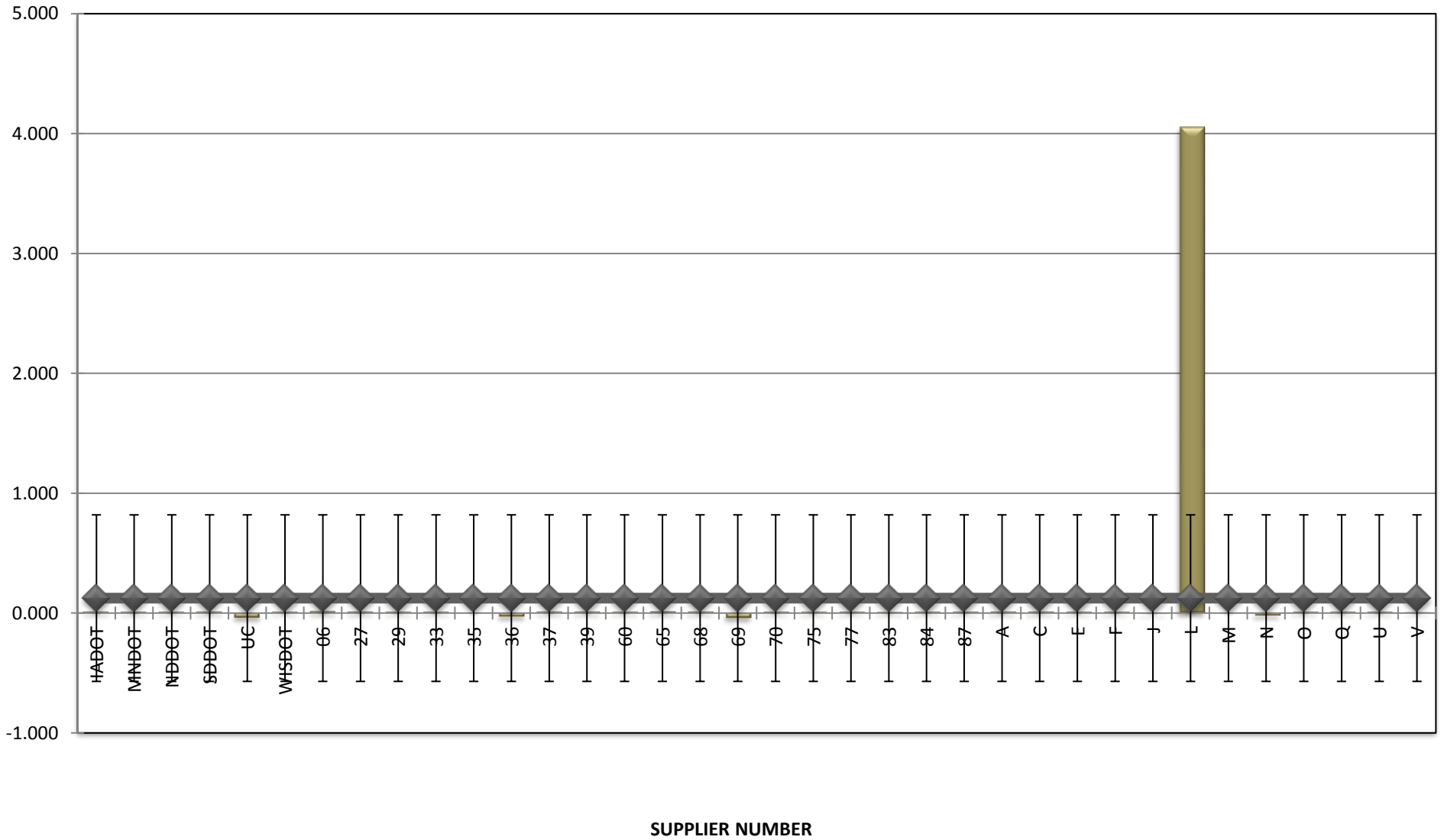
COMBINED STATE BINDER GROUP ROUND ROBIN
SUMMARY B 2018-4

% Recovery @ 100 Pa



COMBINED STATE BINDER GROUP ROUND ROBIN
SUMMARY B 2018-4

Jnr @ 3200 Pa



COMBINED STATE BINDER GROUP ROUND ROBIN
SUMMARY B 2018-4

% Recovery @ 3200 Pa

